



# GUIDE TO DECK AND TRIM FASTENING

**CLIP&RIP™  
FASCIA SYSTEM**

**PRO PLUG® SYSTEM  
DECKFAST®**

**CAP-TOR® xd  
HEADCOTE®**

**STRUCTURAL  
SMART-BIT®**



## About Us

Our goal at Starborn is to provide professional contractors, as well as, leading building materials distributors and dealers nationwide with quality construction fasteners and innovative fastening solutions that bring value to their business.

Founded in 1961, Starborn Industries originally provided wood products to the building industry, but by the early 1980's construction fasteners became our primary product line. Since the late 1990's, Starborn has focused its fastener line on deck fastening solutions. We carefully monitor the decking industry and work closely with decking manufacturers to ensure the best fastening solutions for all types of deck installations as shown by our current offering of proprietary and patented products. These include CAP-TOR® xd, DECKFAST®, PRO PLUG® SYSTEM, SMART-BIT®, and others as shown in this catalog. New product development is continuous and ongoing. Our constant goal of inventing and providing innovative fastening solutions has made Starborn a leading provider of fasteners in the decking industry worldwide. We are the deck fastening specialists.

## To Our Customers

We value your business. We value your relationship. Your success is our success. Our commitment is to continue to provide you with superior service and knowledgeable support for all of your fastener needs.

**Starborn Industries** is located in Edison, NJ and is an independent, second generation family-owned and operated business.



## STRUCTURAL H19, H23

Code Compliant Wood Screws

4

## STRUCTURAL F19, F23, F23 Stainless

Code Compliant Wood Screws

6

## CLIP&RIP™ Universal Hidden Deck Clip

Pre-assembled and Collated Hidden Deck Fasteners for PVC/Composite and Wood Decking

8

## DECKFAST® Epoxy

Color Matched Screws for Pressure Treated Lumber and PVC Trim

10

## DECKFAST® Stainless

Stainless Steel Screws for Hardwood, Cedar, Redwood and Pressure Treated Decking

12

## HEADCOTE® Stainless

Stainless Steel Screws With Color Coated Heads for Hardwood, Cedar, Redwood, Pressure Treated Decking, PVC Trim and Deck Fascia

14

## CAP-TOR® xd Epoxy/Stainless

Color Matched Screws for Composite and PVC Decking and Cladding

16

## CAP-TOR® xd Metal

Color Matched Screws for Composite/PVC Decking and Cladding to Metal Framing

18

## FASCIA SYSTEM Epoxy/Stainless

Composite Fascia Board and Cladding

20

## PRO PLUG® SYSTEM Deck

Hidden Fastener for PVC/Composite Decking and Cladding

22

## PRO PLUG® SYSTEM Trim

Hidden Fastener for PVC Trim Board

24

## PRO PLUG® SYSTEM Fascia

Hidden Fastener for Composite Fascia Board and Cladding

26

## PRO PLUG® SYSTEM Wood

Hidden Fastener for Wood Decking and Flooring

28

## SMART-BIT® Predrilling and Countersinking Tool

For use with HEADCOTE® and DECKFAST® Stainless Screws

30

## SMART-BIT® Depth Setter Tool

Wire Rack Display and 3' End of Aisle Display

32

## Deck Fastening Center

Driving Tool for Setting Screws to the Perfect Depth

34



# STRUCTURAL<sup>®</sup>

## H19, H23

### Code Compliant Screws



#### APPLICATION

- Structural H19 Screws designed for wood-to-wood connections in decking, fencing, pergolas, timber framing, and more.
- Structural H23 Screws designed for attaching deck ledgers to rim joists, with additional use in other structural wood-to-wood connections.

#### FEATURES

- IRC/IBC code compliant
- No predrilling
- Superior design values and performance
- Speed-Knurl™ reduces friction for faster installation
- Tri-Forge® Point allows for fast start and reduces driving torque
- H19 comparable to 3/8" lag
- H23 comparable to 1/2" lag

#### INSTALLATION

- Structural screws should be installed using an impact driver or high-torque low speed drill.
- Predrilling is not required, but can be used where lumber is prone to splitting.
- For the H19 screw drive until washer head is flush to wood surface or countersink head flush.
- For the H23 screws drive until washer is drawn firm and flush. Do not overdrive or countersink.

#### TECHNICAL GUIDES

TECHNICAL GUIDE	PRODUCT
Deck Ledger to Rim Joist	H23
Ledger to Stud with 0, 1, or 2 Layers of 5/8" Gypsum	H23
Truss or Rafter to Top Plate	H19
Cladding Over Foam Sheathing	H19
Bottom Plate to Rim Board	H19
Screw Properties and Design Values	All

#### FINISH

Black exterior coating

#### CORROSION

Exterior Use

Approved for use in ACQ, Fire Retardant Treated (FRT) and other pressure treated lumbers.

For salt water or other areas where corrosion is a concern, use Grade 316 Stainless.

#### DRIVE SYSTEM

Hex Head

For more information including technical guides and code compliance reports, visit [starbornindustries.com](http://starbornindustries.com).



STRUCTURAL H19 and H23

DESIGN FEATURES



**Hex Head**  
For maximum driveability



**Speed-Knurl™**  
Reduces friction for faster installation



**Tri-Forge® Point**  
Fast start, minimal splitting, reduced driving torque

STRUCTURAL H19 PACKAGING



LENGTH	20 PC		50 PC		250 PC	500 PC
	ITEM NO	CASE QTY	ITEM NO	CASE QTY	ITEM NO	ITEM NO
2-7/8"	XH19CL0288	6	XH19CT0288	6	XH19CQ0288	XH19CV0288
4"	XH19CL0400	6	XH19CT0400	6	XH19CQ0400	XH19CV0400
6"	XH19CL0600	6	XH19CT0600	6	XH19CQ0600	XH19CV0600
8"	XH19CL0800	6	XH19CT0800	3	XH19CQ0800	—
10"	XH19CL1000	6	XH19CT1000	3	XH19CQ1000 (200PC)	—

STRUCTURAL H23 PACKAGING



LENGTH	20 PC		50 PC		250 PC	500 PC
	ITEM NO	CASE QTY	ITEM NO	CASE QTY	ITEM NO	ITEM NO
4"	XH23CL0400	6	XH23CT0400	6	XH23CQ0400	XH23CV0400
5"	XH23CL0500	6	XH23CT0500	6	XH23CQ0500	XH23CV0500

# STRUCTURAL

## F19, F23, F23 Stainless

### Code Compliant Screws



#### APPLICATION

- Structural F19 screws are ideal for heavy-duty applications including decking, pergolas, fencing, timber framing, SIP panels, log homes, and general wood-to-wood connections.
- Structural F23 screws provide a code-compliant alternative to lag screws and through-bolts, perfect for decking, deck ledger, fencing, pergolas, landscape timbers, and timber framing.
- Structural F23 Stainless screws are made from 316 stainless and designed for coastal or high-corrosion environments, ideal for decks, deck ledgers, docks, boardwalks, piers, pergolas, and fencing.

#### FEATURES

- IRC/IBC code compliant
- No predrilling
- Superior design values and performance
- Speed-Knurl™ reduces friction for faster installation
- The F19 and F23 Tri-Forge® Point allows for fast start and reduces driving torque
- The F23 Stainless Type 17 cut-point for fast start and reduced splitting
- F19 comparable to 3/8" lag
- F23 and F23 Stainless Comparable to 1/2" lag

#### INSTALLATION

- Structural screws should be installed using an impact driver or high-torque low speed drill.
- Predrilling is not required, but can be used where lumber is prone to splitting.
- For the F19 and F23 screws drive until washer is drawn firm and flush. Do not overdrive or countersink.

#### TECHNICAL GUIDES

TECHNICAL GUIDE	PRODUCT		
Deck Ledger to Rim Joist	F23	F23 Stainless	
Ledger to Stud with 0, 1, or 2 Layers of 5/8" Gypsum	F23		
Multi-Ply Dimensional Wood Connections	F19	F23	
Cladding Over Foam Sheathing	F19	F23	F23 Stainless
Screw Properties and Design Values	All		

For more information including technical guides and code compliance reports, visit [starbornindustries.com](http://starbornindustries.com).

#### FINISH

F19, F23: Black exterior coating  
F23 Stainless: Grade 316 Stainless

#### CORROSION

Exterior Use

Approved for use in ACQ, Fire Retardant Treated (FRT) and other pressure treated lumbers.

For salt water or other areas where corrosion is a concern, use Grade 316 Stainless.

#### DRIVE SYSTEM

Star drive



**DESIGN FEATURES**

\*F23 Stainless only



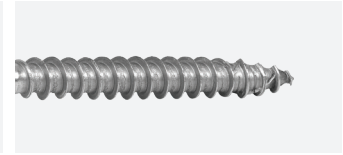
**Low Profile Flat Head**  
Star drives eliminate cam-out



**Speed-Knurl™**  
Reduces friction for faster installation



**Tri-Forge® Point**  
Fast start, minimal splitting, reduced driving torque



**Type 17 Point**  
Fast start and minimal splitting

**STRUCTURAL F19 PACKAGING**



LENGTH	20 PC		50 PC		250 PC	500 PC
	ITEM NO	CASE QTY	ITEM NO	CASE QTY	ITEM NO	ITEM NO
2-7/8"	XF19CL0288	6	XF19CT0288	6	XF19CQ0288	XF19CV0288
4-1/2"	XF19CL0450	6	XF19CT0450	6	XF19CQ0450	XF19CV0450
6"	XF19CL0600	6	XF19CT0600	6	XF19CQ0600	XF19CV0600
8"	XF19CL0800	6	XF19CT0800	3	XF19CQ0800	—
10"	XF19CL1000	6	XF19CT1000	3	XF19CQ1000 (200PC)	—
12"	XF19CL1200	5	—	—	XF19CQ1200 (200PC)	—
14"	XF19CL1400	5	—	—	XF19CQ1400 (200PC)	—
16"	XF19CL1600	5	—	—	XF19CQ1600 (150PC)	—

**STRUCTURAL F23 PACKAGING**



LENGTH	20 PC		50 PC		250 PC	500 PC
	ITEM NO	CASE QTY	ITEM NO	CASE QTY	ITEM NO	ITEM NO
2-7/8"	XF23CL0288	6	XF23CT0288	6	XF23CQ0288	XF23CV0288
4"	XF23CL0400	6	XF23CT0400	6	XF23CQ0400	XF23CV0400
5"	XF23CL0500	6	XF23CT0500	6	XF23CQ0500	XF23CV0500
6"	XF23CL0600	6	XF23CT0600	6	XF23CQ0600	XF23CV0600
8"	XF23CL0800	6	XF23CT0800	3	XF23CQ0800	—
10"	XF23CL1000	6	XF23CT1000	3	XF23CQ1000 (200PC)	—

**STRUCTURAL F23 STAINLESS PACKAGING (316 STAINLESS)**



LENGTH	20 PC		250 PC	500 PC
	ITEM NO	CASE QTY	ITEM NO	ITEM NO
2-7/8"	XF23U01L0288	6	XF23U01Q0288	XF23U01V0288
4"	XF23U01L0400	6	XF23U01Q0400	XF23U01V0400
5"	XF23U01L0500	6	XF23U01Q0500	XF23U01V0500
6"	XF23U01L0600	6	XF23U01Q0600	XF23U01V0600

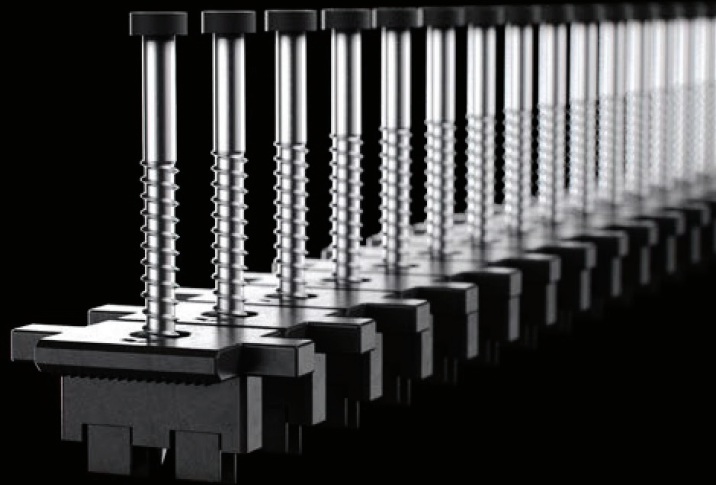
**STRUCTURAL F23 #38 BLACK STAINLESS PACKAGING (316 STAINLESS)**



LENGTH	20 PC		250 PC	500 PC
	ITEM NO	CASE QTY	ITEM NO	ITEM NO
2-7/8"	XF23U38L0288	6	XF23U38Q0288	XF23U38V0288
4"	XF23U38L0400	6	XF23U38Q0400	XF23U38V0400
5"	XF23U38L0500	6	XF23U38Q0500	XF23U38V0500
6"	XF23U38L0600	6	XF23U38Q0600	XF23U38V0600

# Clip&Rip™

## Universal Hidden Deck Clip




### APPLICATION

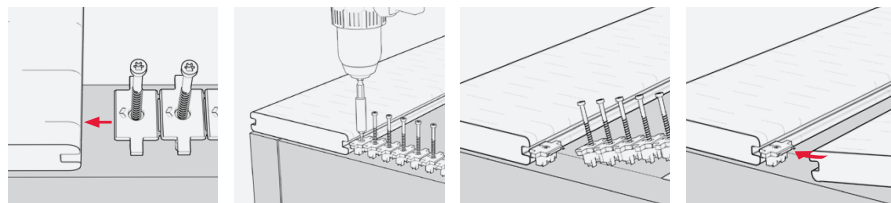
Clip&Rip™ universal hidden deck fasteners secure inner decking boards quickly and effectively while maintaining a clean, fastener-free finish. Clip&Rip™ comes pre-loaded with stainless steel screws and assembled in ready-to-install strips saving time and money.

### FEATURES

- For use with grooved composite, PVC and wood decking in any deck pattern.
- Pre-assembled in collated “sticks” of 16 for increased installation speed and ease of use.
- Clip creates 3/16” spacing between boards
- 305 and 316 stainless steel screw options available
- T15 driver bit included

### INSTRUCTIONS

- Insert the strip of clips with the  arrow pointing forward into the leading board groove. Center over joist.
- Drive the screw down in a straight and steady fashion until the head of the screw is flush with the clip.
- Lift up on strip to break off installed clip.
- Install clips at every joist along length of board.
- Place next board into position. Holding the deck board at a slight angle, push deck board into previously installed clips. Check gapping between boards to ensure consistency.



### ESTIMATED COVERAGE

JOIST SPACING	100 SQ FT. (AREA)	200 SQ FT. (AREA)	300 SQ FT. (AREA)	400 SQ FT. (AREA)	500 SQ FT. (AREA)
12"	210	441	672	882	1113
16"	175	336	512	672	848

### BOARD COMPATIBILITY

Clip&Rip™ works with most brands of grooved PVC and Composite deck boards, including Trex®, Timbertech®, Fiberon®, MoistureShield® and more. It also works with most styles of 5/4 hardwood and thermally modified deck boards.

### FINISH

#### Starter Clips

- 305 Stainless Starter Clip

#### Field Clips

- Glass Filled Nylon Field Clips
- 305 and 316 Stainless screw options

### CORROSION

Exterior use—Approved for use in ACQ and pressure treated lumber.

For salt water or other areas where corrosion is a concern, use Grade 316 Stainless.

### DRIVE SYSTEM

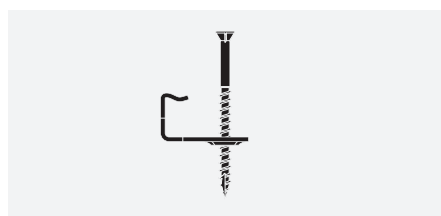
T15 Star Drive



## COMPATIBLE PVC/COMPOSITE BOARDS

TREX®	TIMBERTECH®	FIBERON®	DECKORATORS®	MOISTURESHIELD®
SELECT TRANSCEND TRANSCEND LINEAGE SIGNATURE ENHANCE	LEGACY RESERVE PRIME PRIME+ TERRAIN (AZEK) HARVEST (AZEK) LANDMARK (AZEK) VINTAGE	PARAMOUNT PROMENADE GOODLIFE CONCORDIA SANCTUARY	PICTURE FRAME VENTURE VAULT VISTA VOYAGE TRAILHEAD TROPICS (LOWES) DISTRESSED (LOWES)	VISION MERIDIAN ELEVATE VANTAGE
ARMADILLO®	WOLF	ENVISION®	NEWTECH WOOD®	SYLVANIX®
COMMERCIAL LIFESTYLE ESSENTIAL HERITAGE	PERSPECTIVE	DISTINCTION EXPRESSION EVERGRAIN RIDGE PREMIUM	MAGELLAN VOYAGER	ELEMENTS DESTINATIONS ELITE ESSENTIALS ELITE COLLECTION SKYLINE
TRUNORTH CLUBHOUSE®	VERANDA®	VEKADECK®		
ULTRA LEGACY	ELITE HIGH-PERFORMANCE	GROOVE		

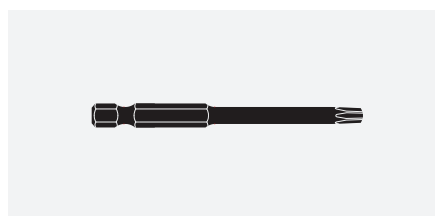
## SYSTEM COMPONENTS



Starter Clip



CLIP&RIP Strip



T15 Bit

## CLIP&RIP™ STRIP PACKAGING



LENGTH	ITEM NO	FINISH	DRIVE TYPE	CLIPS PER STRIP	PACK QTY
1-3/4"	KAS38T175	305 Stainless with Nylon Clip	T15	16	192 (12 strips)
	KAU38T175	316 Stainless with Nylon Clip			192 (12 strips)
	KAS38B175	305 Stainless with Nylon Clip			800 (50 strips)
	KAU38B175	316 Stainless with Nylon Clip			800 (50 strips)

## CLIP&RIP™ STARTER CLIP PACKAGING

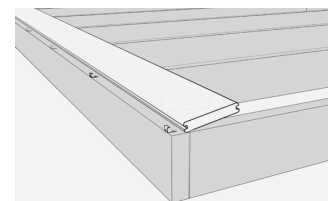
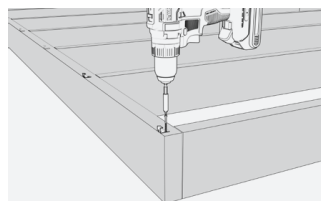
LENGTH	ITEM NO	FINISH	DRIVE TYPE	PACK QTY
1-5/8"	KBS01A162	305 Stainless with Stainless Clip	T15	12 strips



## STARTER CLIP INSTRUCTIONS

- For first and last boards, screw a starter clip at every joist.
- Once all starter clips are installed, push the first deck board into the starter clips.
- Proceed to fasten remainder of boards with standard clips.

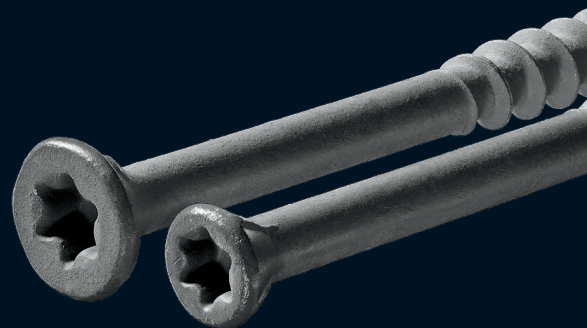
\*Starter clips are only available in 305 stainless steel



# DECKFAST®

## Epoxy

### Exterior Wood Screws



#### APPLICATION

Color Matched Screws for Pressure Treated Lumber and PVC Trim.

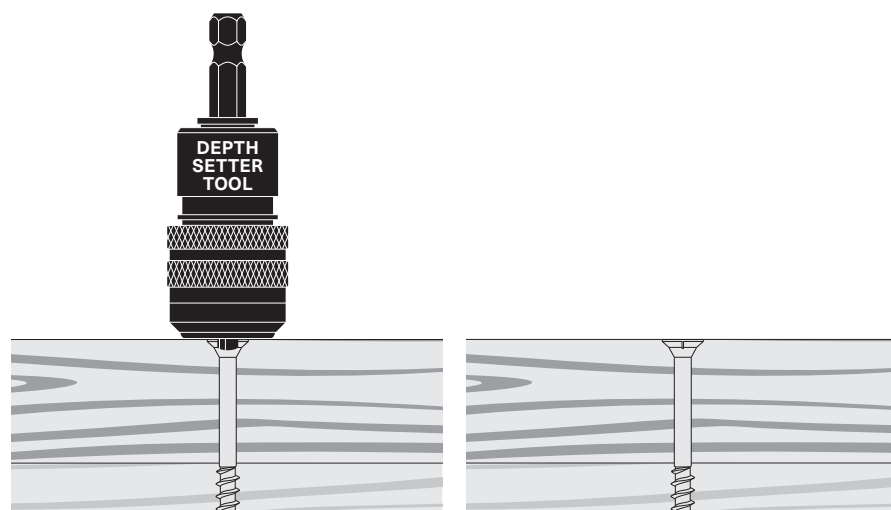
- Flat Head—For use in pressure treated decking.
- Trim Head—For use in pressure treated trim and finish applications.

#### FEATURES

- For excellent corrosion resistance and color matching with various types of treated lumber and PVC trim (Gray, Green, Red, Tan, White)
- Lengths from 1-1/4" to 6"
- Reinforced flat or trim head with nibs for better countersinking
- Extra deep star drive recesses to prevent cam-out
- Type 17 auger tip for faster, easier insertion and to help prevent splitting

#### INSTALLATION

- Install flush with decking surface. Do not overdrive.
- Install two screws per joist.
- Predrilling is recommended when fastening within 1-1/2" from the end of a deck board.



#### FINISH

Epoxy coated

#### CORROSION

Exterior use

Approved for use in ACQ and pressure treated lumber.

For salt water or other areas where corrosion is a concern, use Grade 316 Stainless.

#### DRIVE SYSTEM

Star drive

#### TOOL COMPATIBILITY

SMART-BIT® Depth Setter Tool



AVAILABLE COLORS



\*White (#39) available only in Trim Head—2" and 2-1/2" lengths

FLAT HEAD PACKAGING



LENGTH	DRIVE TYPE	COUNT PACKAGING			POUND PACKAGING		
		RETAIL PACKS	JOB PACKS	BULK	1 LB	5 LBS	9 LBS
1-1/4"	T20	100	500	8000	•	•	•
1-5/8"		100	500	5000	•	•	•
2"		100	500	3500	•	•	•
2-1/2"	T25	75	250	2500	•	•	•
3"		75	250	2000	•	•	•
3-1/2"		50	250	1000	•	•	•
4"		50	250	1000	•	•	•
5"		30	—	500	•	—	•
6"		30	—	500	•	—	•

TRIM HEAD PACKAGING

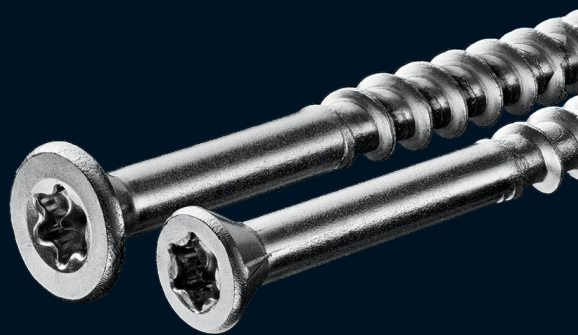


LENGTH	DRIVE TYPE	COUNT PACKAGING			POUND PACKAGING		
		RETAIL PACKS	JOB PACKS	BULK	1 LB	5 LBS	9 LBS
1-5/8"	T20	100	500	5000	•	•	•
2"		100	500	3500	•	•	•
2-1/2"		75	250	2500	•	•	•
3"		75	250	2000	•	•	•
3-1/2"		50	250	1000	•	•	•
4"		50	250	1000	•	•	•

# DECKFAST®

## Stainless

### Exterior Wood Screws



#### APPLICATION

Stainless steel screws for hardwood, cedar, redwood and pressure treated decking.

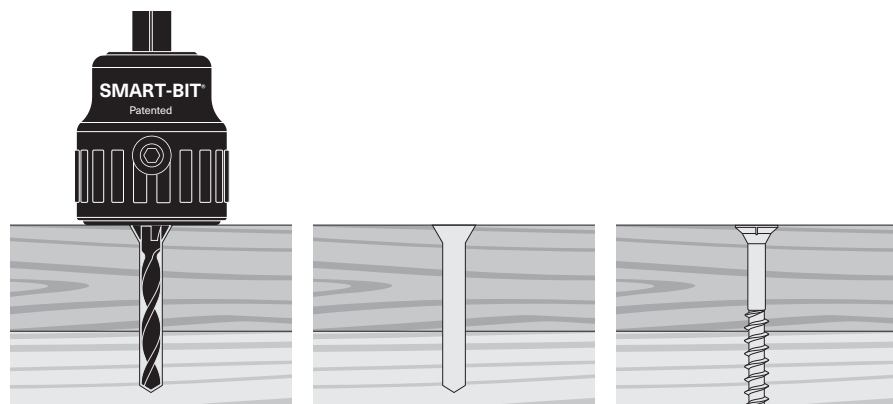
- Flat Head—For hardwood, cedar, redwood and pressure treated decking.
- Trim Head—For hardwood, cedar and redwood; pressure treated trim and finish applications.

#### FEATURES

- Grade 305 and Grade 316 stainless steel for superior corrosion resistance
- Lengths from 1-1/4" to 3-1/2"
- Reinforced flat or trim head with nibs for better countersinking
- Extra deep star drive recesses to prevent cam-out
- Type 17 auger tips for faster, easier insertion and to help prevent splitting

#### INSTALLATION

- Predrilling required for hardwoods and in all cases when fastening within 1-1/2" from the end of a deck board.
- Slightly countersink screw head. Do not overdrive.
- Recommended: For a clean and professional finish use SMART-BIT® Predrilling and Countersinking Tools in combination with screws.



#### FINISH

Grade 305 Stainless  
Grade 316 Stainless

#### CORROSION

Exterior use

Approved for use in ACQ and pressure treated lumber.

For salt water or other areas where corrosion is a concern, use Grade 316 Stainless.

#### DRIVE SYSTEM

Star drive

#### TOOL COMPATIBILITY

SMART-BIT® Predrilling and Countersinking Tool

SMART-BIT® Depth Setter Tool





FLAT HEAD PACKAGING



LENGTH	DRIVE TYPE	COUNT PACKAGING			POUND PACKAGING		
		RETAIL PACKS	JOB PACKS	BULK	1 LB	5 LBS	9 LBS
6 x 1-1/4"	T20	100	500	5000	•	•	•
8 x 1-5/8"		100	500	4000	•	•	•
8 x 2"		100	500	3000	•	•	•
10 x 2-1/2"	T25	75	250	2000	•	•	•
10 x 3"		75	250	1500	•	•	•
10 x 3-1/2"		50	250	1000	•	•	•

TRIM HEAD PACKAGING

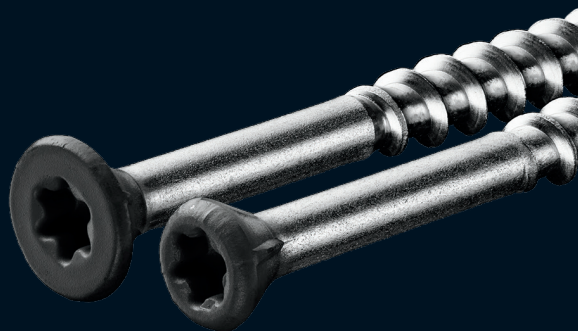


LENGTH	DRIVE TYPE	COUNT PACKAGING			POUND PACKAGING		
		RETAIL PACKS	JOB PACKS	BULK	1 LB	5 LBS	9 LBS
7 x 1-5/8"	T15	100	500	5000	•	•	•
7 x 2-1/4"		75	250	3000	•	•	•
8 x 2-1/2"	T20	75	250	2500	•	•	•
8 x 3"		75	250	2000	•	•	•

# HEADCOTE®

## Stainless

### Deck Screws



#### APPLICATION

Stainless steel screws with color coated heads for hardwood, cedar, redwood, pressure treated decking, PVC fascia and trim boards.

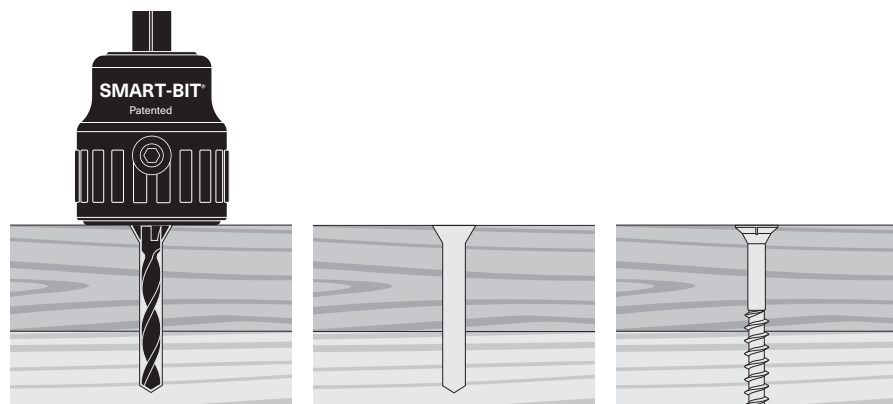
- Flat Head—For hardwood, cedar, redwood, composite/PVC and pressure treated decking.
- Trim Head—For hardwood, cedar, redwood, composite/PVC, pressure treated decking (finish applications) and PVC trim.

#### FEATURES

- Grade 305 and Grade 316 stainless steel for superior corrosion resistance
- Lengths from 1-5/8" to 3"
- Reinforced flat or trim head with nibs for better countersinking
- Extra deep star drive recesses to prevent cam-out
- Type 17 auger tips for faster, easier insertion and to help prevent splitting
- Approved for use in ACQ and other pressure treated lumber

#### INSTALLATION

- Predrilling required for hardwoods and in all cases when fastening within 1-1/2" from the end of a deck board.
- Slightly countersink screw head. Do not overdrive.
- Recommended: For a clean and professional finish use SMART-BIT® Predrilling and Countersinking Tools in combination with screws.



#### FINISH

Grade 305 Stainless  
Grade 316 Stainless

#### CORROSION

Exterior use

Approved for use in ACQ and pressure treated lumber.

For salt water or other areas where corrosion is a concern, use Grade 316 Stainless.

#### DRIVE SYSTEM

Star drive

#### TOOL COMPATIBILITY

SMART-BIT® Depth Setter Tool

SMART-BIT® Predrilling and Countersinking Tool

AVAILABLE COLORS



HEADCOTE® COLORS TRIM

LENGTH	AVAILABLE COLORS
	305 STAINLESS
7 x 1-5/8"	31, 34, 37, 38, 39, 43, 45, 53, 54, 63, 64, 65, 71, 73, 81, 82
7 x 2-1/4"	34, 37, 38, 39
8 x 2-1/2"	31, 34, 37, 39, 54, 55, 64, 65, 71, 73, 81, 82, 87
8 x 3"	31, 34, 37
LENGTH	316 STAINLESS
7 x 1-5/8"	34, 39, 54
8 x 2-1/2"	34, 39, 54

HEADCOTE® COLORS FLAT

LENGTH	AVAILABLE COLORS
	305 STAINLESS
8 x 2"	34, 37
10 x 2-1/2"	31, 34, 37
10 x 3"	

FLAT HEAD PACKAGING



LENGTH	DRIVE TYPE	COUNT PACKAGING				
		RETAIL PACK	DECK PACK	CONTRACTOR PACK	PRO PACK	BULK
2"	T20	100	350	1050	—	3000
2-1/2"	T25	100	250	1050	1750	2000
3"		85	265	1050	1750	1500

TRIM HEAD PACKAGING

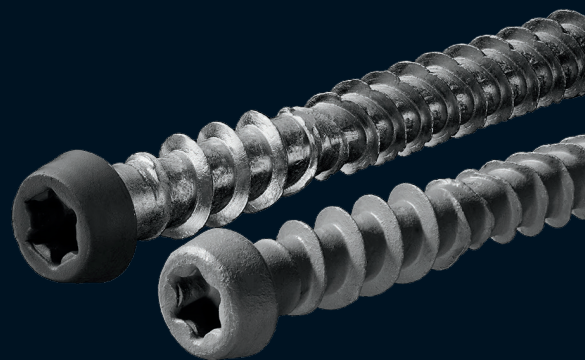


LENGTH	DRIVE TYPE	COUNT PACKAGING				
		RETAIL PACK	DECK PACK	CONTRACTOR PACK	PRO PACK	BULK
1-5/8"	T15	100	350	1050	—	5000
2-1/4"		100	350	—	—	3000
2-1/2"	T20	100	350	1050	1750	2500 (305 SS Only)
3"		—	350	1050	1750	2000

# CAP-TOR® xd

## Epoxy/Stainless

### Composite/PVC Deck Screws



#### APPLICATION

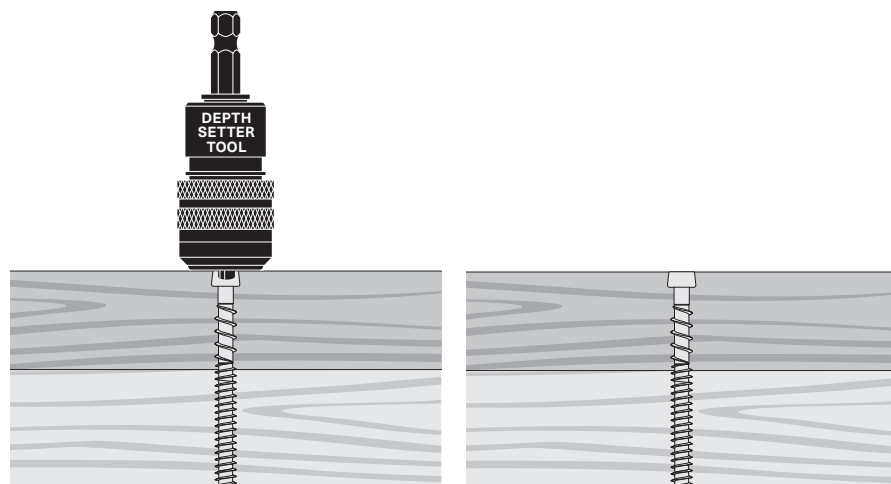
Color matched deck screw available in a variety of colors to match all of the leading composite/PVC deck boards and cladding on the market.

#### FEATURES

- Extra deep star drive recess to prevent cam-out
- Undercut head to cut cleanly through the hard outer layer of capstock decking
- Reverse threads to prevent mushrooming and surface defects
- Tri-lobular shanks and thread to reduce driving torque
- Type 17 auger tips for faster, easier insertion and to help prevent splitting
- Available in a variety of colors

#### INSTALLATION

- Install flush with decking surface. Do not overdrive.
- Install two screws per joist.
- Predrilling is recommended when fastening within 1" from the end of a deck board.
- Recommended: For a clean and professional finish use the SMART-BIT® Depth Setter Tool in combination with screws.



#### FINISH

Epoxy coated  
Grade 305 Stainless  
Grade 316 Stainless

#### CORROSION

Exterior use

Approved for use in ACQ and pressure treated lumber.

For salt water or other areas where corrosion is a concern, use Grade 316 Stainless.

#### DRIVE SYSTEM

Star drive

#### TOOL COMPATIBILITY

SMART-BIT® Depth Setter Tool



AVAILABLE COLORS



CAP-TOR® XD COLORS

LENGTH	AVAILABLE COLORS	
	EPOXY	
10 x 2"	34, 37, 38, 43, 53, 54, 55, 56, 62, 64, 65, 71, 73, 81, 87	
10 x 2-3/4"	31, 34, 37, 38, 43, 53, 54, 55, 56, 62, 63, 64, 65, 71, 73, 81, 82, 87	
LENGTH	305 STAINLESS	
10 x 2"	01	34, 37, 43, 53, 54, 55, 64, 65, 71, 73, 81, 87
10 x 2-1/2"		31, 34, 37, 38, 39, 43, 45, 53, 54, 55, 56, 62, 63, 64, 65, 71, 73, 81, 82, 87
10 x 2-3/4"	—	31, 34, 37, 38, 39, 43, 45, 48, 53, 54, 55, 63, 64, 65, 71, 73, 81, 82, 87
LENGTH	316 STAINLESS	
10 x 2-1/2"	01	31, 34, 37, 38, 39, 43, 53, 54, 55, 56, 62, 63, 64, 65, 71, 73, 81, 82
10 x 2-3/4"		31, 34, 37, 38, 39, 43, 45, 53, 54, 55, 63, 64, 65, 71, 73, 81, 82, 87

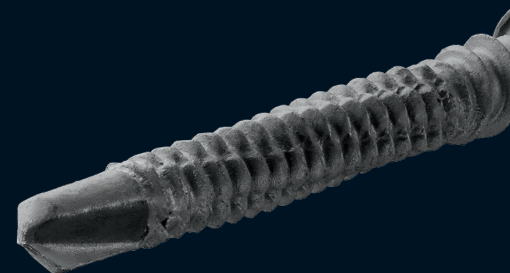
CAP-TOR® XD PACKAGING



LENGTH	FINISH	DRIVE TYPE	COUNT PACKAGING			
			RETAIL PACK	DECK PACK	CONTRACTOR PACK	PRO PACK
2"	Epoxy	T20	100	350	—	1750
2-3/4"						
2"	305 Stainless		100	350	1050	1750
2-1/2"						
2-3/4"						
2-1/2"	316 Stainless		100	350	1050	1750
2-3/4"						

# CAP-TOR® xd Metal

Composite/PVC  
Deck Screw For Metal Framing



## APPLICATION

Color matched screws for attaching composite/PVC decking and cladding to steel or aluminum framing.

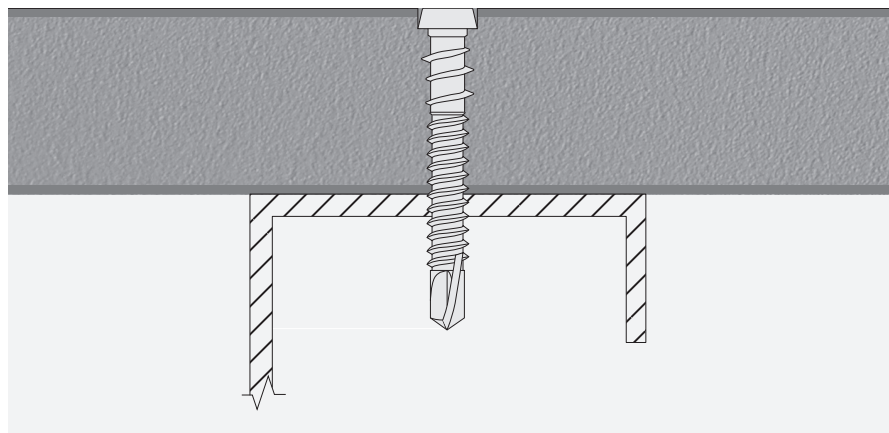
- 10 x 1-1/2": 3/4" to 1" decking material attached to 16–20 gauge joists or furring.
- 10 x 1-5/8": 3/4" to 1" decking material attached to 12–18 gauge joists or two 14 gauge joists doubled up.
- 12 x 2-3/8": 1" to 1-1/2" decking material attached to up to 1/4" thick joists.

## FEATURES

- Epoxy coated Grade 410 stainless steel
- Sharp drill point for quick installation into metal framing
- Extra deep star drive recess to prevent cam-out
- Undercut head to cut cleanly through the hard outer layer of capstock decking
- Available in a variety of colors

## INSTALLATION

- Install flush with decking surface. Do not overdrive.
- Install two screws per joist with a minimum three threads beyond metal framing.
- Predrilling is recommended when fastening within 1" from the end of a deck board. Pre-drill decking only, not joist.



## FINISH

Epoxy coated

## CORROSION

Exterior use

Approved for use in ACQ and pressure treated lumber.

For salt water or other areas where corrosion is a concern, use Grade 316 CAP-TOR® xd fasteners with wood sleeper system.

## DRIVE SYSTEM

Star drive

AVAILABLE COLORS



CAP-TOR® XD METAL COLORS

LENGTH	FINISH	AVAILABLE COLORS
10 x 1-1/2"	410 Stainless	34, 37, 53, 54, 55, 62, 64, 71, 73, 81, 87
10 x 1-5/8"		31, 34, 38, 37, 39, 43, 53, 54, 55, 56, 62, 63, 64, 65, 71, 73, 81, 82, 87
12 x 2-3/8"		34, 37, 39, 53, 54, 64, 65, 71, 73, 81



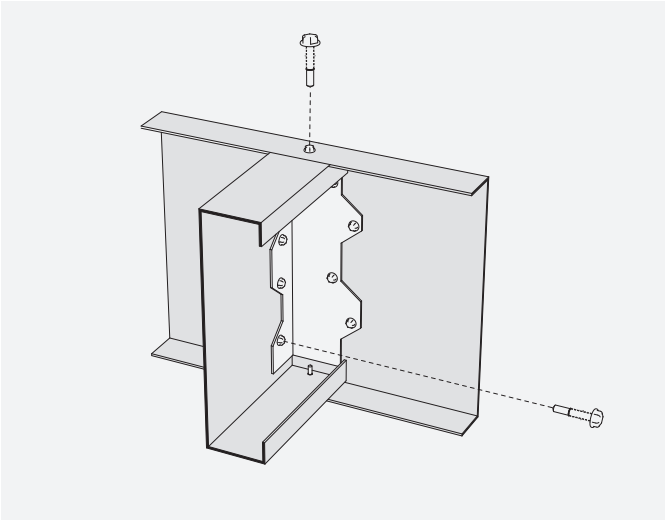
CAP-TOR® XD METAL PACKAGING

LENGTH	FINISH	DRIVE TYPE	COUNT PACKAGING			
			RETAIL PACK	DECK PACK	PRO PACK	BULK
1-1/2"	410 Stainless	T20	100	350	1750	3500
1-5/8"			100	350	1750	3500
2-3/8"			75	265	1750	—

BUILDEX® TEKS SELECT™



- 5/16" Hex Washer Head: 10–16 x 3/4"
- For all steel-to-steel and bracket connections.
- Teks Select™ is a trademark of ITW Buildex® and Illinois Tool Works, Inc. Teks Select™ is manufactured by ITW Buildex® and packaged and distributed by Starborn Industries.



# FASCIA SYSTEM

## Epoxy/Stainless

### Fascia Screw



#### APPLICATION

Color matched fastening system for composite/PVC deck fascia and cladding. The system securely fastens fascia material while also allowing boards to expand and contract freely. Installation is a two-step process utilizing a pre-drilling tool and screws.

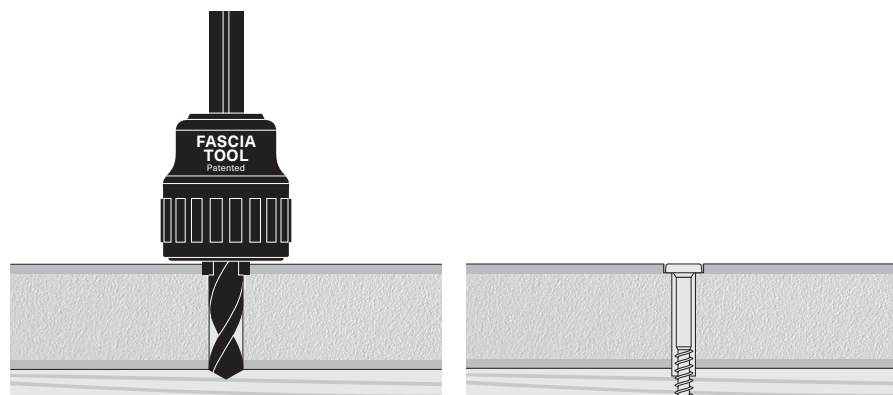
#### FEATURES

- Designed for use with 1/2" to 3/4" composite fascia profiles
- Fascia Tool creates an over-sized hole so that the board can expand and contract freely and provides a pre-set countersink that matches the head diameter and depth of the Fascia Screw
- Free spinning collar on Fascia Tool prevents damage to the fascia board surface
- Type 17 auger tips for faster, easier insertion and to help prevent splitting
- Available in a variety of colors

#### INSTALLATION

Follow all fascia manufacturer instructions, including specifications for screw spacing, edge/end distances, and gapping.

- Pre-drill with the Fascia Tool until the collar stops spinning.
- Drive the Fascia Screw until snug, do not overtighten. The material should hang from the screw to allow for expansion and contraction.



#### FINISH

Epoxy coated  
Grade 305 Stainless

#### CORROSION

Exterior use

Approved for use in ACQ and pressure treated lumber.

For salt water or other areas where corrosion is a concern, use Grade 316 Stainless.

#### DRIVE SYSTEM

Star drive

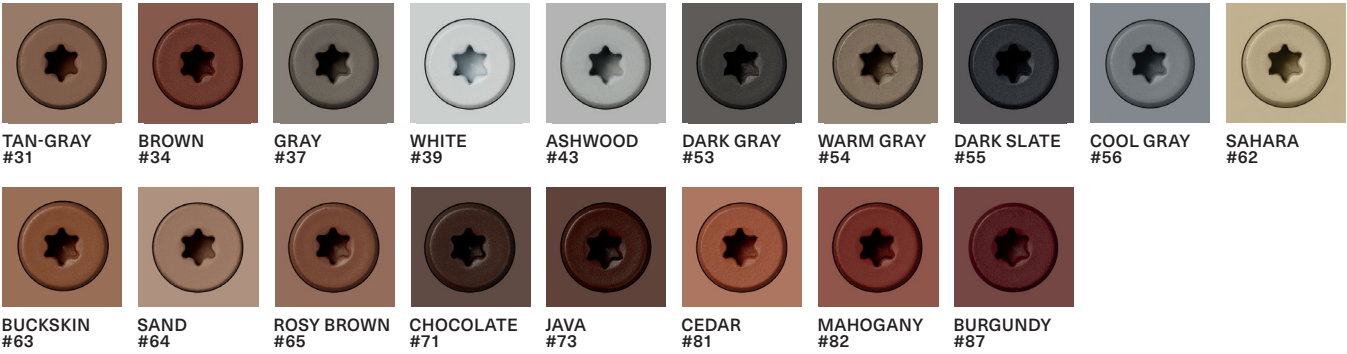
#### TOOL COMPATIBILITY

Fascia Tool



FASCIA SYSTEM Epoxy/Stainless

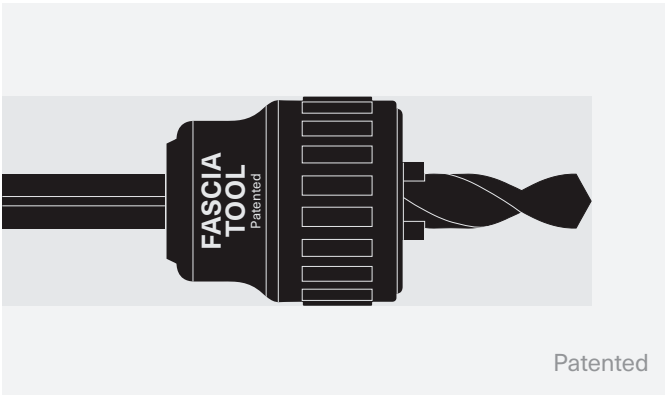
AVAILABLE COLORS



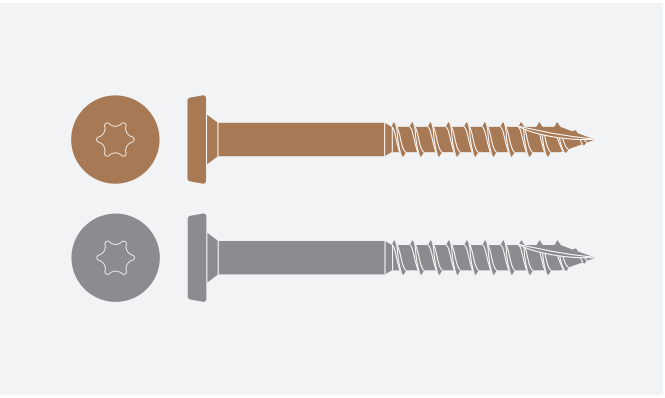
FASCIA SYSTEM COLORS

LENGTH	AVAILABLE COLORS	
10 x 1-7/8"	Epoxy	31, 34, 37, 39, 43, 53, 54, 55, 56, 62, 63, 64, 65, 71, 73, 81, 82, 87
9 x 1-7/8"	305 Stainless	

SYSTEM COMPONENTS (SOLD SEPARATELY)



**Fascia Tool**  
Pre-drilling and countersinking



**Fascia Screws**  
Color matched screws available in  
Epoxy Coated or Grade 305 Stainless

FASCIA SYSTEM PACKAGING



LENGTH	FINISH	DRIVE TYPE	COUNT PACKAGING	
			RETAIL PACK	BULK
1-7/8"	Epoxy	T20	100	2500
	305 Stainless			

# PRO PLUG SYSTEM®

## Deck

### Hidden Fastener For PVC/Composite Decking and Cladding



#### APPLICATION

Hidden fastening system that provides a secure face-fastened connection with precision cut plugs made from actual decking and cladding materials. Installation is a two-step process utilizing a setting tool, screws and plugs. All components must be used together as instructed to ensure proper function.

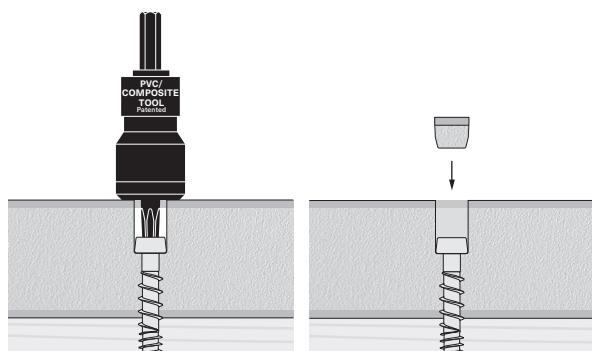
#### FEATURES

- Plugs are for 1" nominal (or greater) material and available in all leading deck and cladding brands
- Available in Kits (screws, plugs and tool) and Inventory Management (system components sold separately)
- Patented PVC/Composite Tool with Auto-Stop™ sets screw to the correct depth without stripping screw recess
- Free spinning stop collar on setting tool prevents damage to the board surface
- Screws feature a Type 17 auger tip for faster, easier insertion and to help prevent splitting

#### INSTALLATION

Follow all decking and cladding manufacturer instructions, including specifications for screw spacing, edge/end distances, and gapping. Predrilling is recommended for all composite deck boards. Predrill a 3/16" pilot hole through the decking material only; not the joist. For Armadillo®, DuraLife®, NewTechWood® and Sylvanix® decking, use a 7/32" pilot hole.

- Fit setting tool with application specific driver bit, marked "DECK".
- Drive the screw with the PVC/Composite Tool using a standard drill on high speed.
- Do not use impact driver with setting tool.
- The setting tool's Auto-Stop™ mechanism will make a "pop" sound when the screw is set to the correct depth. (Do not hesitate or slow down while driving.)
- Insert plug into hole and tap with a smooth-faced hammer until the plug is flush with board.



#### FINISH

Epoxy coated  
Grade 305 Stainless  
Grade 316 Stainless

#### CORROSION

Exterior use

Approved for use in ACQ and pressure treated lumber.

For salt water or other areas where corrosion is a concern, use Grade 316 Stainless.

#### DRIVE SYSTEM

Star drive

#### TOOL COMPATIBILITY

PVC/Composite Tool  
PVC/Composite DECK Bits

## PLUGS AVAILABLE IN THE FOLLOWING BRANDS

AERATIS®	AMERICAN PRO	ARMADILLO®	CLUBHOUSE®	DEKORATORS®
DURALIFE®	ENDECK®	ENVISION®	EVA-LAST®	FIBERON®
MOISTURESHIELD®	NEWTECHWOOD®	SYLVANIX®	TIMBERTECH®	TIVA®
TREX®	TRUNORTH DECK®	VEKADECK®	WEARDECK®	WOLF

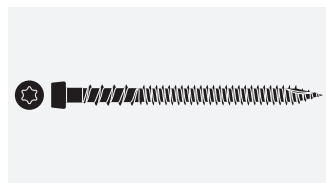
New board brands are always being added to our product offering. Please refer to our website or contact Starborn® customer service if you do not see the board brand you are looking to use on your project.

## SYSTEM COMPONENTS



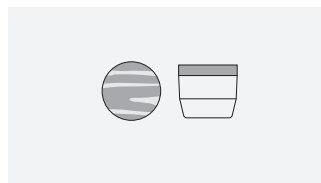
### PVC/Composite Tool

For setting screws to the correct depth



### Screws

Epoxy coated, grade 305 or grade 316 stainless, or epoxy coated grade 410 stainless for metal framing



### Plugs

Made from actual PVC/Composite decking and trim material



### Deck Bits

## PRO PLUG® SYSTEM DECK PACKAGING

KIT PACKAGING					
LENGTH	FINISH	COVERAGE	SCREWS	PLUGS	TOOL
2-3/4"	Epoxy	100 lf	150	165	1
		100 sq ft	350	375	1
		300 sq ft	1050	1125	1
2-1/2"	305 Stainless	100 lf	150	165	1
		100 sq ft	350	375	1
		300 sq ft	1050	1125	1

INVENTORY MANAGEMENT—PLUGS ONLY	
PLUGS	COVERAGE
100	—
375	100 sq ft
1125	300 sq ft

FOR METAL FRAMING—CAP-TOR XD METAL			
LENGTH	FINISH	SCREWS	COVERAGE
1-1/2"	Epoxy Coated 410 Stainless (Metal Framing)	375	100 sq ft
1-5/8"			

### For Metal Framing

Use 1-1/2" or 1-5/8" CAP-TOR® xd Metal screw and purchase plugs and PVC/Composite Tool separately.

INVENTORY MANAGEMENT—SCREWS ONLY			
LENGTH	FINISH	SCREWS	COVERAGE
2"	Epoxy	100	—
		375	100 sq ft
		1125	300 sq ft
2-3/4"		100	—
		375	100 sq ft
		1125	300 sq ft
3"		100	—
		375	100 sq ft
		1125	300 sq ft
2"	305 Stainless	100	—
		375	100 sq ft
		1125	300 sq ft
2-1/2"		100	—
		375	100 sq ft
		1125	300 sq ft
3"		100	—
		375	100 sq ft
		1125	300 sq ft
2-1/2"	316 Stainless	100	—
		375	100 sq ft
		1125	300 sq ft
3"		100	—
		375	100 sq ft
		1125	300 sq ft



# PRO PLUG SYSTEM®

## Trim

### Hidden Fastener for PVC Trim Board



#### APPLICATION

Hidden fastening system that provides a secure face-fastened connection with precision cut plugs made from actual PVC trim boards. Installation is a two-step process utilizing a setting tool, screws and plugs. All components must be used together as instructed to ensure proper function.

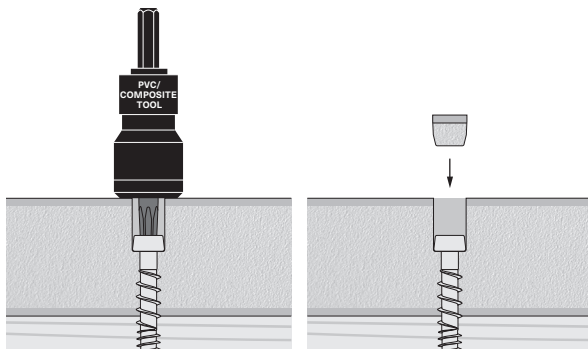
#### FEATURES

- Plugs are for 5/8" to 1-1/4" thick PVC trim and available in all leading brands
- Available in Kits (screws, plugs and tool) and Inventory Management (system components sold separately)
- Patented PVC/Composite Tool with Auto-Stop™ sets screw to the correct depth without stripping screw recess
- Free spinning stop collar on setting tool prevents damage to the board surface
- Screws feature a Type 17 auger tip for faster, easier insertion and to help prevent splitting

#### INSTALLATION

Follow all PVC trim manufacturer instructions, including specifications for screw spacing, edge/end distances, and gapping.

- Fit setting tool with application specific driver bit, marked "TRIM".
- Drive the screw with the PVC/Composite Tool using a standard drill on high speed.
- Do not use impact driver with setting tool.
- The setting tool's Auto-Stop™ mechanism will make a "pop" sound when the screw is set to the correct depth. (Do not hesitate or slow down while driving.)
- Insert plug into hole and tap with a smooth-faced hammer until the plug is flush with board.



#### FINISH

Epoxy coated  
Grade 305 Stainless  
Grade 316 Stainless

#### CORROSION

Exterior use

Approved for use in ACQ and pressure treated lumber.

For salt water or other areas where corrosion is a concern, use Grade 316 Stainless.

#### DRIVE SYSTEM

Star drive

#### TOOL COMPATIBILITY

PVC/Composite Tool  
PVC/Composite TRIM Bits

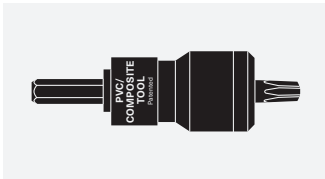


PLUGS AVAILABLE IN THE FOLLOWING BRANDS

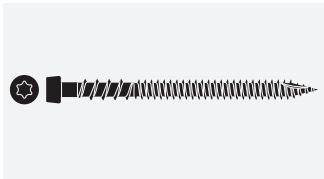
AZEK®	BETTER BRAND®	BORAL®	CERTATRIM®	GREEN ATLANTIC®
INTEPLAST®	KLEER®	KOMA®	PALIGHT®	PLY GEM®
RESTORATION MILLWORK®	ROYAL®	VERSATEX®	WOLF	XO™

New board brands are always being added to our product offering. Please refer to our website or contact Starborn® customer service if you do not see the board brand you are looking to use on your project.

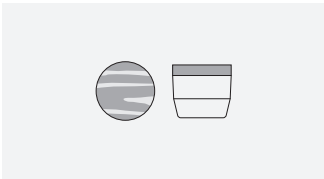
SYSTEM COMPONENTS



**PVC/Composite Tool**  
For setting screws to the correct depth



**Screws**  
Epoxy coated, grade 305 or grade 316 stainless, or epoxy coated grade 410 stainless for metal framing



**Plugs**  
Made from actual PVC/Composite decking and trim material



**Trim Bits**

PRO PLUG® SYSTEM TRIM PACKAGING

KIT PACKAGING					
LENGTH	FINISH	COVERAGE	SCREWS	PLUGS	TOOL
2"	Epoxy	50 lf	75	85	—
		250 lf	375	400	1
		750 lf	1125	1200	1
2-3/4"	Epoxy	50 lf	75	85	—
		250 lf	375	400	1
		750 lf	1125	1200	1
2"	305 Stainless	50 lf	75	85	—
		250 lf	375	400	1
		750 lf	1125	1200	1
2-1/2"	305 Stainless	50 lf	75	85	—
		250 lf	375	400	1
		750 lf	1125	1200	1

INVENTORY MANAGEMENT—SCREWS ONLY			
LENGTH	FINISH	SCREWS	COVERAGE
2"	Epoxy	100	—
		375	100 sq ft
		1125	300 sq ft
2-3/4"	Epoxy	100	—
		375	100 sq ft
		1125	300 sq ft
3"	Epoxy	100	—
		375	100 sq ft
		1125	300 sq ft
2"	305 Stainless	100	—
		375	100 sq ft
		1125	300 sq ft
2-1/2"	305 Stainless	100	—
		375	100 sq ft
		1125	300 sq ft
3"	305 Stainless	100	—
		375	100 sq ft
		1125	300 sq ft
2-1/2"	316 Stainless	100	—
		375	100 sq ft
		1125	300 sq ft
3"	316 Stainless	100	—
		375	100 sq ft
		1125	300 sq ft

INVENTORY MANAGEMENT—PLUGS ONLY	
PLUGS	COVERAGE
100	—
400	250 lf
1200	750 lf

# PRO PLUG<sup>®</sup> SYSTEM

## Fascia

### Hidden Fastener for Composite Fascia Board and Cladding



#### APPLICATION

Hidden fastening system that securely fastens deck fascia and cladding while also allowing boards to expand and contract freely. Precision cut plugs are made from actual fascia material. Installation is a three-step process utilizing a predrilling tool and a setting tool (sold as a tool set) and screws and plugs. All components must be used together as instructed to ensure proper function.

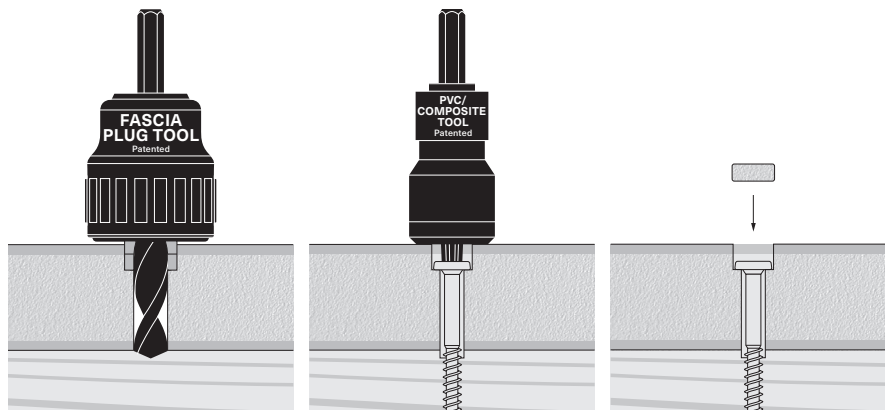
#### FEATURES

- Fascia Plug Tool predrills an over-sized hole so that the board can expand and contract freely and provides a pre-set countersink that matches the diameter and depth of screw and plug
- Free spinning stop collar on Fascia Plug Tool prevents damage to the board surface
- PVC/Composite Tool with Fascia Bit sets screw to proper depth and eliminates overdriving screw
- Screws feature Type 17 auger tip for faster, easier insertion and to help prevent splitting
- Kit packaging includes screws and plugs (Fascia Plug Tool Set sold separately)

#### INSTALLATION

Follow all fascia manufacturer instructions, including specifications for screw spacing, edge/end distances, and gapping.

- Fit setting tool with application specific driver bit, marked "FSCA".
- Predrill with the Fascia Plug Tool until the collar stops spinning.
- Drive the screw with the PVC/Composite Tool using a standard drill on high speed.
- Do not use impact driver with setting tool.
- The setting tool's Auto-Stop™ mechanism will make a "pop" sound when the screw is set to the correct depth. (Do not hesitate or slow down while driving.)
- Insert plug into hole and tap with a smooth-faced hammer until the plug is flush with board.



#### FINISH

Epoxy coated  
Grade 305 Stainless  
Grade 316 Stainless

#### CORROSION

Exterior use

Approved for use in ACQ and pressure treated lumber.

For salt water or other areas where corrosion is a concern, use Grade 316 Stainless.

#### DRIVE SYSTEM

Star drive

#### TOOL COMPATIBILITY

Fascia Plug Tool Set

PLUGS AVAILABLE IN THE FOLLOWING BRANDS

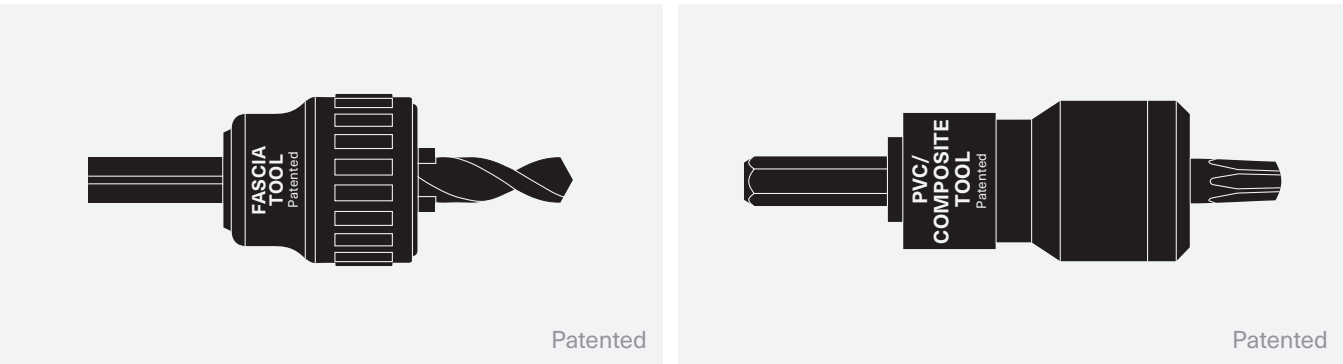
FIBERON®

MOISTURESHIELD®

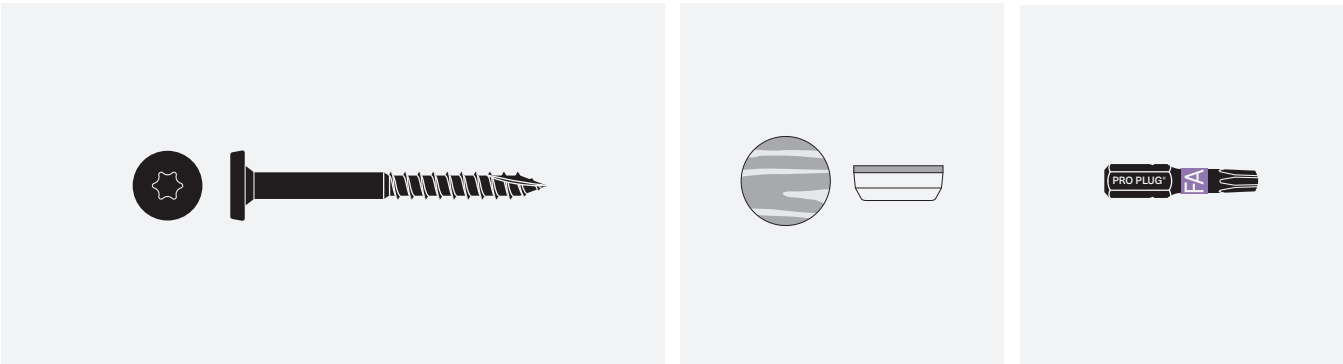
TREX®

New board brands are always being added to our product offering. Please refer to our website or contact Starborn® customer service if you do not see the board brand you are looking to use on your project.

SYSTEM COMPONENTS



**Fascia Plug Tool Set**  
Fascia Plug Tool for pre-drilling and PVC/Composite Tool for screw setting. (Sold Separately)



**Fascia Screws**  
Epoxy coated, grade 305 or grade 316 stainless

**Fascia Plugs**  
Made from actual fascia material to match perfectly

**Fascia Bit**

PRO PLUG® SYSTEM FASCIA PACKAGING

LENGTH	FINISH	DRIVE TYPE	KIT PACKAGING		
			SCREWS	PLUGS	TOOL
1-7/8"	Epoxy	T20	100	100	—
	305 Stainless				
	316 Stainless				



# PRO PLUG SYSTEM®

## Wood

### Hidden Fastener for Wood Decking and Flooring



#### APPLICATION

Hidden fastening system that provides a secure face-fastened connection with precision cut, face grain plugs made from a variety of hardwood decking and flooring. Installation is a four step process utilizing a predrilling tool, glue (sold separately), screw and plug.

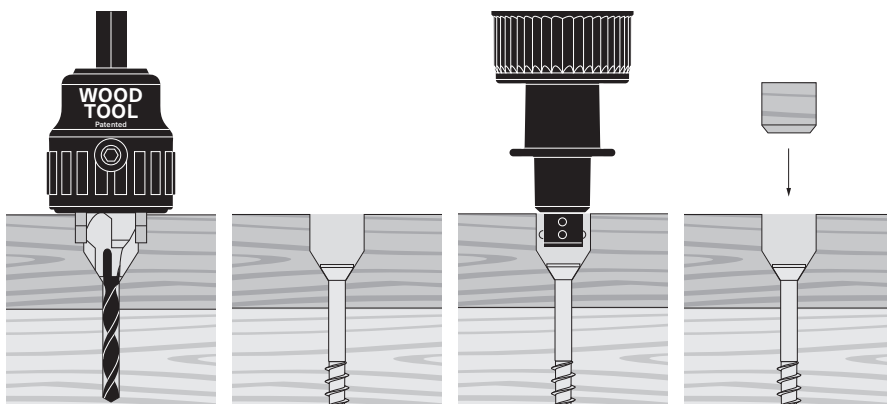
#### FEATURES

- Provides the strength of top-down fastening with the high end finish of face grain wood plugs
- Drill, screw, glue and plug all types of hardwoods in a fraction of the time compared to traditional plug methods
- Patented Wood Tool creates a screw hole, countersink and counterbore to match other system components
- Free spinning stop collar on Wood Tool prevents damage to the board surface
- Patented glue nozzle applies glue to the sidewall of the counterbored hole
- Kit packaging includes screws, plugs and glue nozzle (Wood Tool sold separately)

#### INSTALLATION

Follow all decking and flooring manufacturer instructions, including specifications for screw spacing, edge/end distances, and gapping.

- Predrill with the countersinking Wood Tool using a corded drill on high speed until the collar stops spinning. Remove debris from hole.
- Drive screw so that it is fully seated in the countersink. (Do not overtighten.)
- Fit glue nozzle on glue bottle. Apply glue to hole by pushing down and gently squeezing the bottle while rotating it one quarter turn, then remove. Glue should coat the side walls of the hole.
- Insert plug into hole, align grain of plug to match grain of board, and tap with a smooth-faced hammer until the plug is flush with board.



#### FINISH

##### DECKING KITS

Grade 305 Stainless  
Grade 316 Stainless

##### FLOORING KITS

Grade 305 Stainless

#### CORROSION

##### DECKING & FLOORING KITS

Exterior use

Approved for use in ACQ and pressure treated lumber.

For salt water or other areas where corrosion is a concern, use Grade 316 Stainless.

#### DRIVE SYSTEM

Star drive

#### TOOL COMPATIBILITY

Wood Tool  
Wood Tool Replacement Bits



PLUGS AVAILABLE IN THE FOLLOWING HARDWOOD DECKING

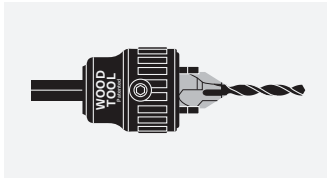
ALASKAN YELLOW CEDAR	BAMBOO	CAMBARA	CUMARU	DASSOXTR FUSED BAMBOO®
GARAPA	IPE	IRON WOODS®	JATOBA	KEBONY®
MAHOGANY	MASSARANDUBA	MERANTI	MERBAU	PEDRA
PROTEAK	RED BALAU	THERMORY®	TIGERWOOD	YELLOW BALAU

PLUGS AVAILABLE IN THE FOLLOWING HARDWOOD FLOORING

AMERICAN CHERRY	AMERICAN WALNUT	EASTERN WHITE PINE	MAHOGANY	POPLAR
RED OAK	WHITE OAK			

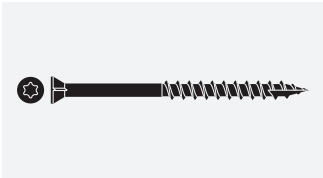
New board brands are always being added to our product offering. Please refer to our website or contact Starborn® customer service if you do not see the board brand you are looking to use on your project.

SYSTEM COMPONENTS



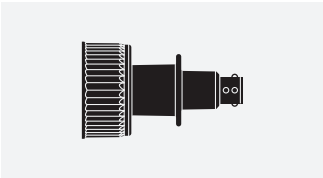
Countersinking Wood Tool

For predrilling and countersink  
(Sold separately)



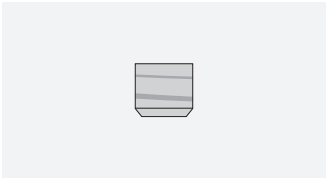
Screws

Grade 305 or Grade 316  
stainless for decking, Grade  
305 stainless for flooring



Glue Nozzle

Applies glue to sidewalls of  
screw hole



Plugs

Made from actual hardwood  
species

PRO PLUG® SYSTEM WOOD PACKAGING

DECK KIT PACKAGING					
LENGTH	FINISH	COVERAGE	SCREWS	PLUGS	TOOL
1-5/8"	305 Stainless	25 sq ft	100	100	—
		100 sq ft	350	350	—
		300 sq ft	1050	1050	—
2-1/2"	305 Stainless	25 sq ft	100	100	—
		100 sq ft	350	350	—
		300 sq ft	1050	1050	—
1-5/8"	316 Stainless	25 sq ft	100	100	—
		100 sq ft	350	350	—
		300 sq ft	1050	1050	—
2-1/2"	316 Stainless	25 sq ft	100	100	—
		100 sq ft	350	350	—
		300 sq ft	1050	1050	—

FLOOR KIT PACKAGING					
LENGTH	FINISH	COVERAGE	SCREWS	PLUGS	TOOL
1-5/8"	305 Stainless	25 sq ft	100	100	—
		100 sq ft	350	350	—
		300 sq ft	1050	1050	—

# SMART-BIT®

## Predrilling and Countersinking Tool

For use with HEADCOTE®  
and DECKFAST® Stainless Screws

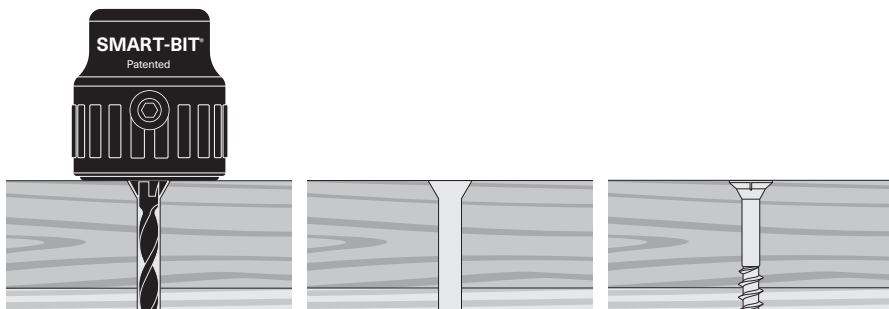
Patented

### APPLICATION

Designed for decking and general woodworking when materials require predrilling. Tools are engineered to match precisely with HEADCOTE® and DECKFAST® stainless steel screws to provide a clean and professional finish.

### FEATURES

- Perfect for use with hardwoods like ipe, mahogany, meranti and merbau
- Pre-set countersink matches head shape of HEADCOTE® and DECKFAST® stainless steel screws
- Free spinning stop collar protects board surface
- Durable ball bearing assembly
- Replaceable Powerbolic® fluted drill bits that cut through decking more than twice as fast as standard wood bits

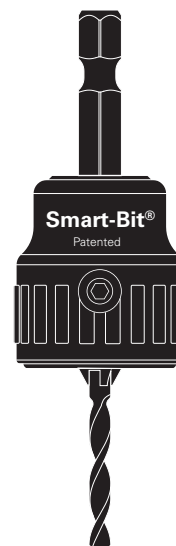


### CORRECT USE

- Choose the tool size gauge that matches the diameter and head style of screw.
- (The 1-1/8" overall hole depth is sufficient for installing decking material up to 5/4 nominal (30mm thick))
- Drill in a straight and stable fashion.
- The hole is complete when the collar stops spinning.

### REPLACING BITS

- Disconnect power and remove the SMART-BIT® Tool from the drill.
- Loosen the set screw with the included hex wrench.
- Remove old bit and insert a new bit fully into the countersink portion with the flat side facing the set screw.
- Tighten the set screw.
- Use only SMART-BIT® Powerbolic® replacement bits.



DIMENSIONS

TOOL SIZE GAUGE (MM)	HEAD STYLE	DRILL BIT MM (INCH)	COUNTERSINK DIA. MM (INCH)	COUNTERSINK ANGLE	HOLE DEPTH* MM (INCH)
#7 (4.2)	Trim	3.0 (7/64")	6.2 (¼")	60°	30 (11/8")
#8 (4.5)	Trim	3.2 (1/8")	6.6 (17/64")	60°	30 (11/8")
#8 (4.5)	Flat	3.2 (1/8")	8.4 (21/64)	82°	30 (1-1/8")
#10 (5.0)	Flat	3.6 (9/64")	9.2 (23/64")	90°	30 (11/8")
#12 (5.5)	Flat	4.0 (5/32")	11 (7/16")	82°	40 (19/16")
#14 (6.2)**	Flat	5.25 (13/64")	12.9 (½")	82°	40&75 (19/16"&3")

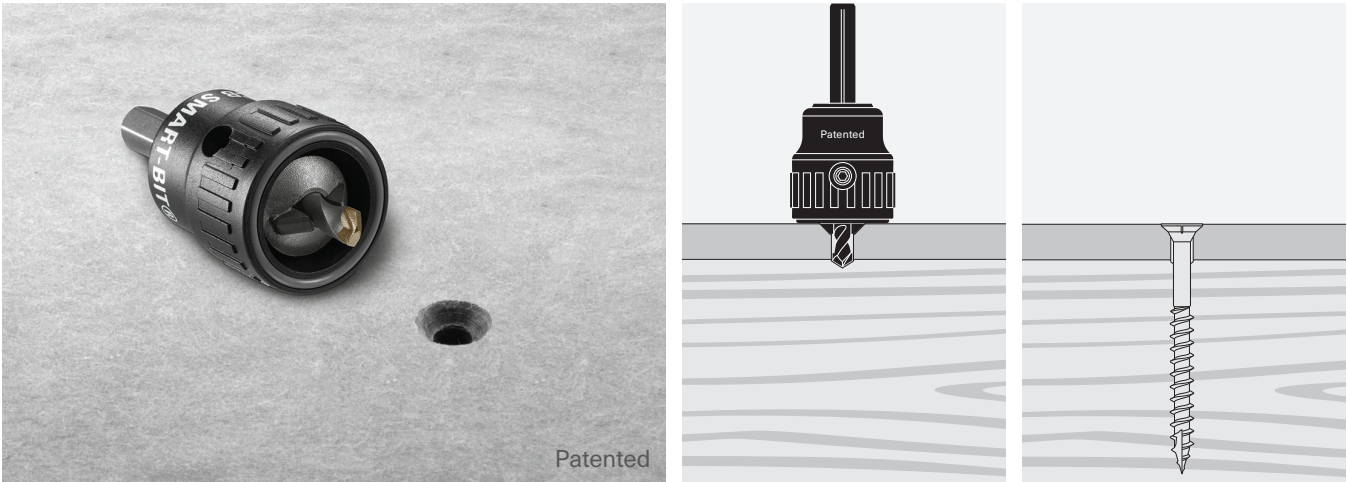
\*Overall hole depth including countersink portion. When installing decking it is general practice to not pre-drill the underlying (joist) material; this is usually treated lumber and does not require pre-drilling. The 11/8" overall hole depth is sufficient for installing decking material up to 5/4 thick (nominal).

\*\*The #14 Smart-Bit® comes with two 40mm bits and one 75mm bit. Durable ball bearing assembly

ALSO AVAILABLE FOR FIBER CEMENT

Designed specifically for use with compressed fiber cement board, but can also be used with a variety of fiber cement and masonry products.

- Tungsten carbide tip
- Durable ball bearing assembly
- Free spinning stop collar
- Use with #10 (5.0mm) flat head screws



# SMART-BIT®

## Depth Setter Tool

Driving Tool for Setting Screws to the Perfect Depth

Patented

### APPLICATION

Designed to drive screws to the perfect depth—flush or below the work surface—every time. Adjustable and easy to use on decks, drywall and in general construction. The tool works with Phillips® and Torx® bits and is designed for use with Starborn® fasteners and other screw products.

### FEATURES

- Perfectly set screws every time
- Locking rings allow for screw depth adjustment and secures desired setting for consistent screw installation
- Auto-Stop™ mechanism sets screw to the correct depth without stripping screw recess
- Free spinning stop collar prevents damage to the board surface

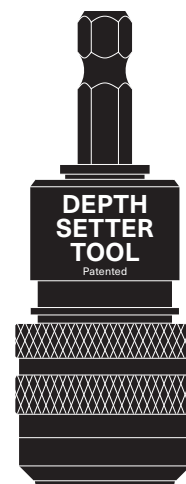
### CORRECT USE

- Use a standard drill. Do not use an impact driver.
- Drill in a straight and stable fashion.
- The screw is set when the Auto-Stop™ mechanism engages fully (making a “pop” sound in most materials).



### REPLACING BITS

- Disconnect power and remove the SMART-BIT® Tool from the drill.
- Loosen the set screw with the included hex wrench.
- Remove old bit and insert a new bit fully into the countersink portion with the flat side facing the set screw.
- Tighten the set screw.
- Use only SMART-BIT® Powerbolic® replacement bits.





**COMPATIBLE STARBORN® SCREWS**

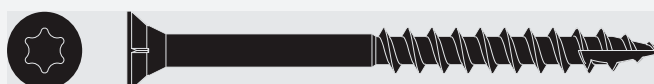
**CAP-TOR® XD STAINLESS**

Color Matched Screws for PVC and Composite Decking



**DECKFAST® EPOXY**

Lumber and PVC Trim



**CAP-TOR® METAL**

Color Matched Screws for Fastening PVC, Composite and Hardwood Decking to Trex Elevations and other Metal Framing Systems



# Deck Fastening Center

## Wire Rack Display

### FEATURES

#### FASCIA SYSTEM

Color matched fastening system for composite/PVC deck fascia and cladding. The system securely fastens fascia material while also allowing boards to expand and contract freely.

#### PRO PLUG® SYSTEM Fascia

Hidden fastening system that securely fastens deck fascia and cladding while also allowing boards to expand and contract freely. Precision cut plugs are made from actual fascia material.

#### CAP-TOR® xd

Color matched deck screw available in a variety of colors to match all of the leading composite/PVC deck boards and cladding on the market.

#### PRO PLUG® SYSTEM Deck

Hidden fastening system that provides a secure face-fastened connection with precision cut plugs made from actual decking and cladding materials.

#### DISPLAY DIMENSIONS

26" W x 76" H x 19" D

\*Product assortment can be adjusted.



# Deck Fastening Center

## 3' End of Aisle Display

### FEATURES

#### STRUCTURAL

Code compliant TER 1703-05. No predrilling required alternatives to traditional lag screws. Supported with comprehensive code reports and application-specific technical guides including deck ledger attachment, truss or rafter to top plate, multi-ply beam connections and more.

#### FASCIA SYSTEM

Color matched fastening system for composite/PVC deck fascia and cladding. The system securely fastens fascia material while also allowing boards to expand and contract freely.

#### PRO PLUG® SYSTEM Deck

Hidden fastening system that provides a secure face-fastened connection with precision cut plugs made from actual decking and cladding materials.

#### CAP-TOR® xd

Color matched deck screw available in a variety of colors to match all the leading composite/PVC deck boards and cladding on the market.

#### DISPLAY DIMENSIONS

36" W x 84" H x 22" D

\*Product assortment can be adjusted.



STARBORN DECKMATCHER TABLE

STARBORN COLOR	ARMADILLO	CLUBHOUSE	DECORATIONS	DURLIFE	ENDECK	ENVISION	EVA-LAST	FIBERON		
TAN GRAY #31		COBBLESTONE	COASTLAND • COSTA • HICKORY			WEATHERED WOOD				
BROWN #34	CAMPFIRE • FIREWOOD • MESA • PAINTED DESERT		MESA • PRAIRIE • REDWOOD	MAHOGANY • TROPICAL WALNUT	CEDAR • SABLE	SPICED TEAK • TANGLED TWINE • VINTAGE OAK		CABIN • IPE • JATORA • MORINGA • MULGA • NATURAL REEF • RUSSET DUNE • SUMAC • TUDOR BROWN		
GRAY #37	COVOTE	HICKORY	ASHWOOD • COMPASS GRAY • FIELDSTONE • GRAY • KETTLE • SALTWATER • SILVERWOOD • SUMMIT	IRONSTONE	SLATE	ALPINE FOG • CAPE FOG • NANTUCKET SHORE	CARIBBEAN CORAL • GRAY SLATE • MINERAL SILVER • SAPPHIRE CEDAR • CHARRED CEDAR	CASTLE GRAY • COTTAGE • AMERICAN MOCHA • NANTUCKET GRAY • SEASIDE MIST		
BLACK #38										
WHITE #39	LINEN • WHITE SAND									
ASHWOOD #43		SANDSTONE	MACADAMIA		ASHWOOD • COASTAL GREY					
IVORY #45										
KHAKI #48										
DARK GRAY #53	CANYON GRAY • SMOKE • STEEL WOOL • THUNDER	DRIFTWOOD	DUSK • LAKEVIEW • RIDGELINE • RIDGEWAY • SIERRA • SMOKEHOUSE	ARCADIA GRAY • GARAPA GREY • SLATE		GREY WOOD • HARBOR GREY	ALASKAN DRIFTWOOD • CAPE TOWN GREY • CONCRETE GRAY	BEACH HOUSE • FLAGSTONE • GRAPHITE • MOONLIGHT COVE • PALO		
WARM GRAY #54		BROOKSTONE	TUNDRA	COASTAL GREY	DAWN	BARNWOOD PLANK • GUNSTOCK	ARCTIC BIRCH	CABANA • CHAI • SANDSTONE • SHADED CAY		
DARK SLATE #55	CHARCOAL	IRONWOOD	DRIFTWOOD • SLATE (PICTURE FRAME)				SIBERIAN BARK	EARL GREY • GRAY BIRCH • WEATHERED CLIFF • WENGE		
COOL GRAY #56	DOVETAIL						SWEDISH OAK	BAMBOO • PRAIRIE WHEAT		
SAHARA #62							HIMALAYAN CEDAR	CLAY • TUSCAN VILLA • WARM SIENNA		
BUCKSKIN #63		IPE	CEDAR • DUNEWOOD • SANDALWOOD • TIMBERLINE	ASPEN TEAK • PEBBLE	DUSK • OLIVEWOOD	HAMPTON DUNE • SANDSTONE • SEASIDE PIER	SAHARA SAND • WEATHERED ASH	BROWNSTONE		
SAND #64	SAW GRASS	CLAY	MILLED MAPLE				OASIS PALM			
ROSY BROWN #65			CIDERHOUSE • MESQUITE • SANDBAR				BRAZILIAN TEAK • ESPRESSO ROAST • HAWAIIAN WALNUT	BURNT UMBER • ESPRESSO • KOA • LATTE		
CHOCOLATE #71	BOURBON • FOOTHILLS • SALOON • TWILIGHT • WALNUT	WALNUT	BARREL-AGED OAK • KHAYA • IRONWOOD • PATHWAY • RIVERHOUSE • SHIPYARD BROWN	CABO BROWN • MOCHA	CHESTNUT	BLACK WALNUT • RUSTIC WALNUT • WEATHERED WICKER • WOODLAND BARK	SPANISH SAFFRON • TIGER COVE	BUNGALOW • CHESTNUT • MOUNTAIN ASH • ROSEWOOD • SANDY PIER		
JAVA #73	BRONCO • TORTOISE • TUMBLEWEED • VINTAGE SLATE	MAHOGANY	CANYON • CHICORY • KINGWOOD • RIVERSIDE • ROSEWOOD • WALNUT • WOODLAND	SEQUOIA						
CEDAR #81			SEDONA	BRAZILIAN CHERRY • GOLDEN TEAK		CEDAR	BARREL OAK • CHESTNUT CEDAR • NATURAL CEDAR • WESTERN RED CEDAR • ISLAND MAHOGANY • NATURAL IPE	TUPELO		
MAHOGANY #82						REDWOOD				
BURGUNDY #87	RUSTIC RED • SUNSET						KONA SUNSET	CINNABAR • MERANTI		
STARBORN COLOR	MOISTURESHIELD		SYLVANIX	TIMBERTECH		TREX	TRUNORTH	WEKADECK	WEARDECK	WOLF
TAN GRAY #31	EARTHTONE			AUTUMN CHESTNUT • WEATHERED TEAK			SAND		WATHERWOOD	WEATHERED IPE
BROWN #34	BRIDLE • CANOE • TIGERWOOD • WALNUT	MESA BROWN • SANDPOINT • SPANISH CEDAR • TEAK	ANTIGUA GOLD • BROWN OAK • DARK ROAST • DARK TEAK • ENGLISH WALNUT • MAHOGANY • MORADO	HAVANA GOLD • JASPER • CORACOE • SADDLE • TREE HOUSE			CAVEINNE	SADDLE		AMBERWOOD • CEDAR RIDGE • ROSEWOOD
GRAY #37	ALPINE GRAY • AURORA MIST • CAPE COD GRAY • CATHEDRAL STONE • CITADEL • LAKE FOG	SUMMIT GREY	ASHWOOD • CASTLE GATE • COASTLINE • DRIFTWOOD • MARITIME GRAY • SEA SALT GRAY • SILVER MAPLE • STONE ASH • STORM GRAY	PEBBLE GREY • ROCKY HARBOR • WHIDBEY			HAZELWOOD • STONE GREY	STORM	GRAY	DRIFTWOOD GREY • POTOMAC GREY
WHITE #39				WHITE	WOOD GRAIN WHITE			WHITE	WHITE	
ASHWOOD #43			BEACHWOOD GRAY • RECLAIMED CHESTNUT • WHITEWASH CEDAR				GRAY	BAREFOOT GRAY		
IVORY #45			HAZELWOOD				ALMOND			
OLIVE GRAY #51								KHAKI		
DARK GRAY #53	GRAYSTONE • HARBOR GRAY • SMOKEY GRAY • SOUTHERN BARNWOOD	ASPEN GRAY • GRAPHITE • LAKE GREY • PONDERAY	ISLAND OAK • SANDSTORM GRAY • WEATHERED OAK	CLAM SHELL • ISLAND MIST			AMAZON GREY • ASH GREY			PUMICE
WARM GRAY #54	CATLINE • SANDSTONE		BOARDWALK • GREY • SLATE GRAY	BISCAYNE • GRAVEL PATH						HARBOR GREY
DARK SLATE #55			AMAZON MIST	WINCHESTER GREY						ONYX
COOL GRAY #56				FOGGY WHARF • RAINIER					BAREFOOT SAND	
SAHARA #62										
BUCKSKIN #63	SHORESIDE		SAND DUNE	NATURAL WHITE OAK						ALMOND • GOLDEN CYPRESS
SAND #64	DESERT SAND • MOCHACCINO	HARVEST BROWN • TROPICAL GOLD	ANTIQUE LEATHER • COCONUT HUSK • BROWNSTONE • FRENCH WHITE OAK • SANDY BIRCH • TIDAL SAND	CARMEL • ROPE SWING			TIGERWOOD		SAND	SAND CASTLE • SILVER TEAK • WILLOW
ROSY BROWN #65										CASHMERE
CHOCOLATE #71	RIVERBANK • SPANISH LEATHER	MERLOT • VANTAGE	CEDAR • PECAN • SILVER OAK	BEACH DUNE • TOASTED SAND			BRULE			BLACK WALNUT • MOCHA
JAVA #73	BRAZILIAN CHESTNUT • COLD BREW • GOLDEN TEAK • HICKORY • IPE • MARINER • NORTHERN • ROSEWOOD • RUSTIC TIMBER		ACACIA • AMERICAN WALNUT • BRAZILIAN WALNUT • DARK COCOA • DARK HICKORY • ESPRESSO • KONA	COASTAL BLUFF • VINTAGE LANTERN • WOODLAND BROWN						ACACIA • CINNAMON
CEDAR #81	RUSTIC CEDAR	CHERRYWOOD	ANTIQUE PALM • CARIBBEAN REDWOOD • DARK OAK • MOCHA • MOUNTAIN REDWOOD • RUSTIC ELM • SARELE CYPRESS	FIRE PIT • LAVA ROCK • SPICED RUM • SUNSET COVE			BRAZILIAN CHERRY • MOCHA • TROPICAL WALNUT	ESPRESSO	CEDAR	TEAKWOOD
MAHOGANY #82						TIKI TORCH	CARAMEL			REDWOOD
BURGUNDY #87	SEASONED MAHOGANY					MADEIRA	RED BORDEAUX			